



Jisc update

Christopher J. Walker

IRIS collaboration meeting

Edinburgh Jan 2023

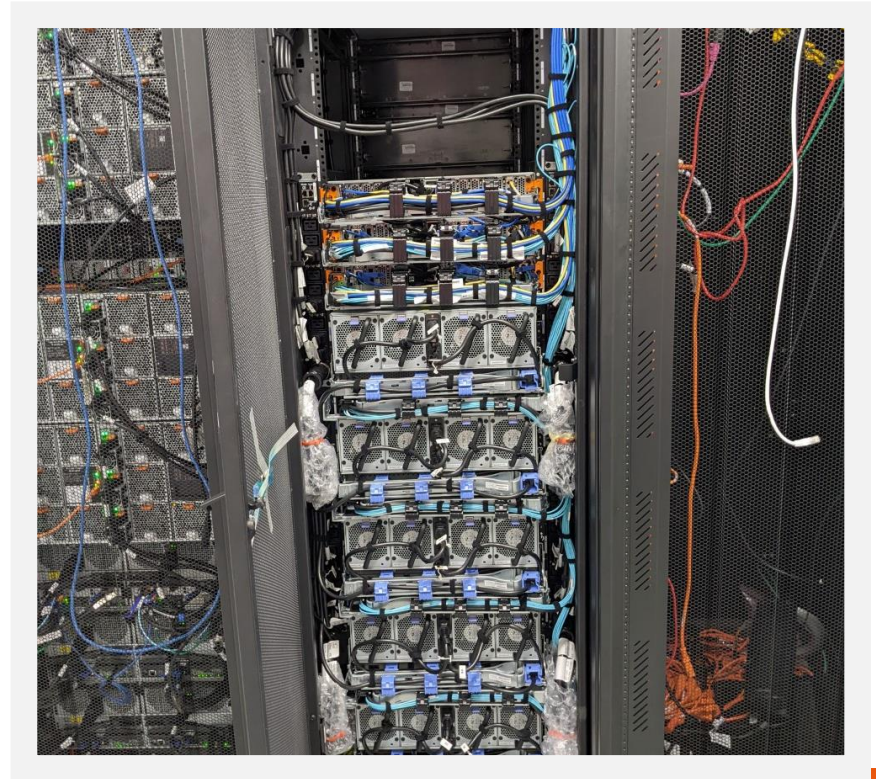
Community building

- **Research Network Engineering Community**
- <https://www.jisc.ac.uk/get-involved/research-network-engineering-community-group>
- Friday 20th January (FTS)
- Monthly zoom + mailing list <https://www.jiscmail.ac.uk/RNE>
- **Tech2tech** (<https://www.jisc.ac.uk/get-involved/tech-2-tech>)
- **Pre HPC-SIG network meeting (6 March - Southampton)**
- **Digital Research Community:** <https://www.jisc.ac.uk/get-involved/digital-research-community-group>
- **EOSC** <https://www.jiscmail.ac.uk/lists/EOSC.html>

Data Centres

Shared Data centres

- Slough and Leeds
- Gathering future capacity and cooling requirements



IPv6

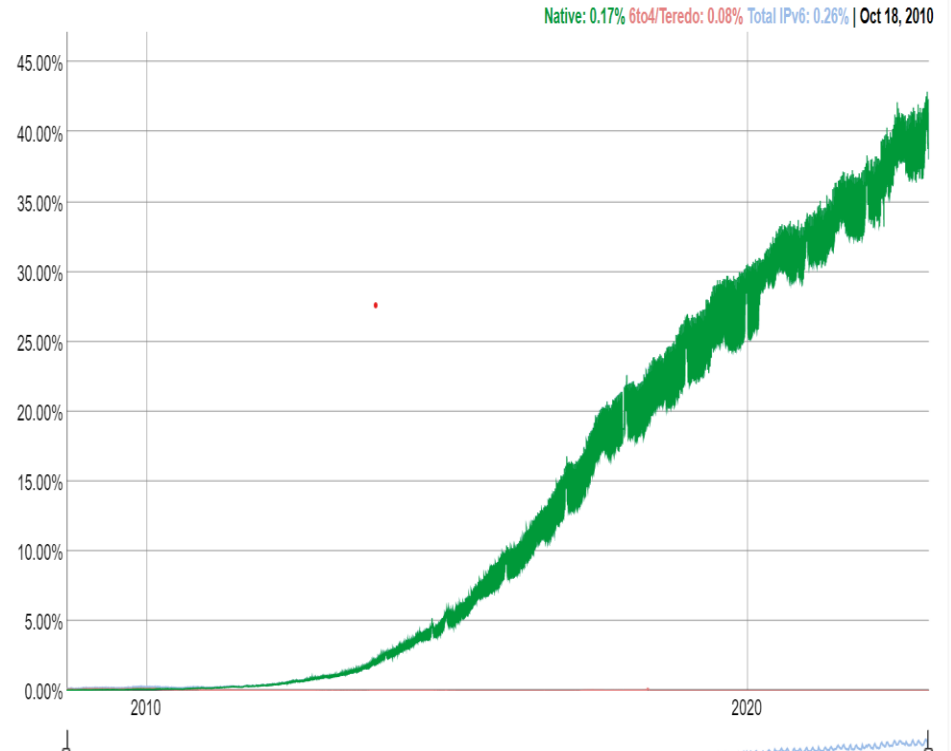
Janet network enabled

- GridPP/WLCG working at scale
- [100Gbps of CERN data over IPv6 on the Janet network - Shaping the future of Janet \(jiscinvolve.org\)](#)
- US Government strategy - move to IPv6 only.
- IRIS?
- What can Jisc do to help?

IRIS collaboration meeting Jan 2022

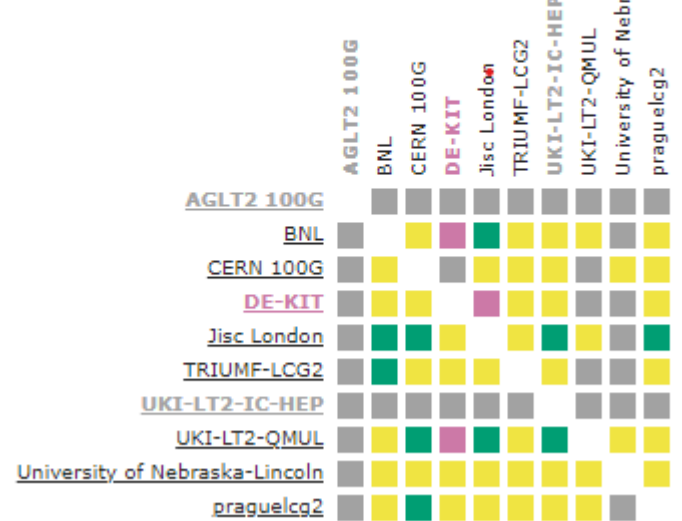
IPv6 Adoption

We are continuously measuring the availability of IPv6 connectivity among Google users. The graph shows the percentage of users that access Google over IPv6.



Monitoring Tools

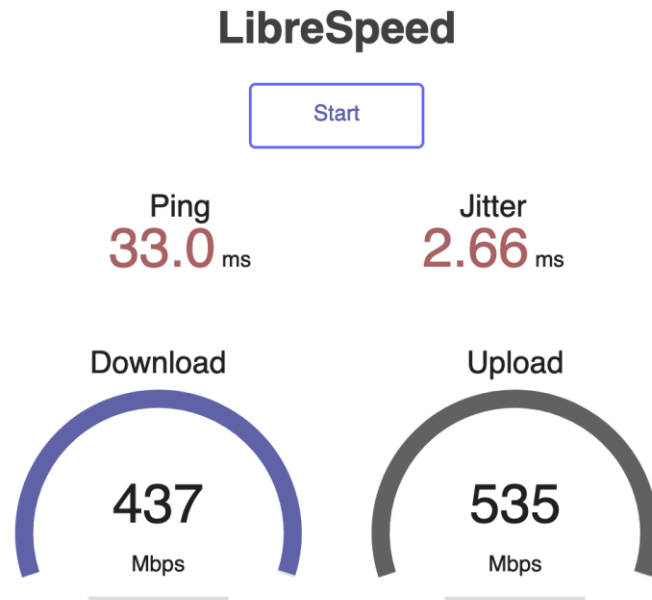
- New Jisc 100G perfSONAR
 - Bandwidth <https://ps-london-bw.perf.ja.net>
 - Latency: <https://ps-london-lat.perf.ja.net>
 - [WLCG 100G mesh](#)
 - 9000 MTU
- RIPE Atlas anchor
 - <https://atlas.ripe.net/probes/6695/>



Testing tools

Ad hoc testing

- **10G** *iperf-slough-10g.perf.ja.net*
 - iperf
 - ethr
- **100G**
 - Contact netperf@jisc.ac.uk
- librespeed (planned)



Data Transfer Node (DTN)

100G Data Transfer node (Planned)

- Globus Endpoint
- Other protocols on request
- Contact netperf@jisc.ac.uk

Future

What services is there demand for from Jisc?

- **AWS Outpost**
- **HPC Procurement**
- **5G**
- **Time** (<https://youtu.be/q3UTvbQk8Eg>)
 - NTP (~ ms) – currently available
 - PTP (~ μ s)
 - White Rabbit (~ ns)
 - E-Infrastructure / Digital Research Infrastructure survey
- **Other services?**
 - Quantum Key Distribution
- **What else do you want/need?**

Questions

Thanks to my colleagues

- Christopher.Walker@jisc.ac.uk
- netperf@jisc.ac.uk
 - Tim Chown
 - Duncan Rand
 - Raul Lopes
- Matthew Dovey