



Science and
Technology
Facilities Council

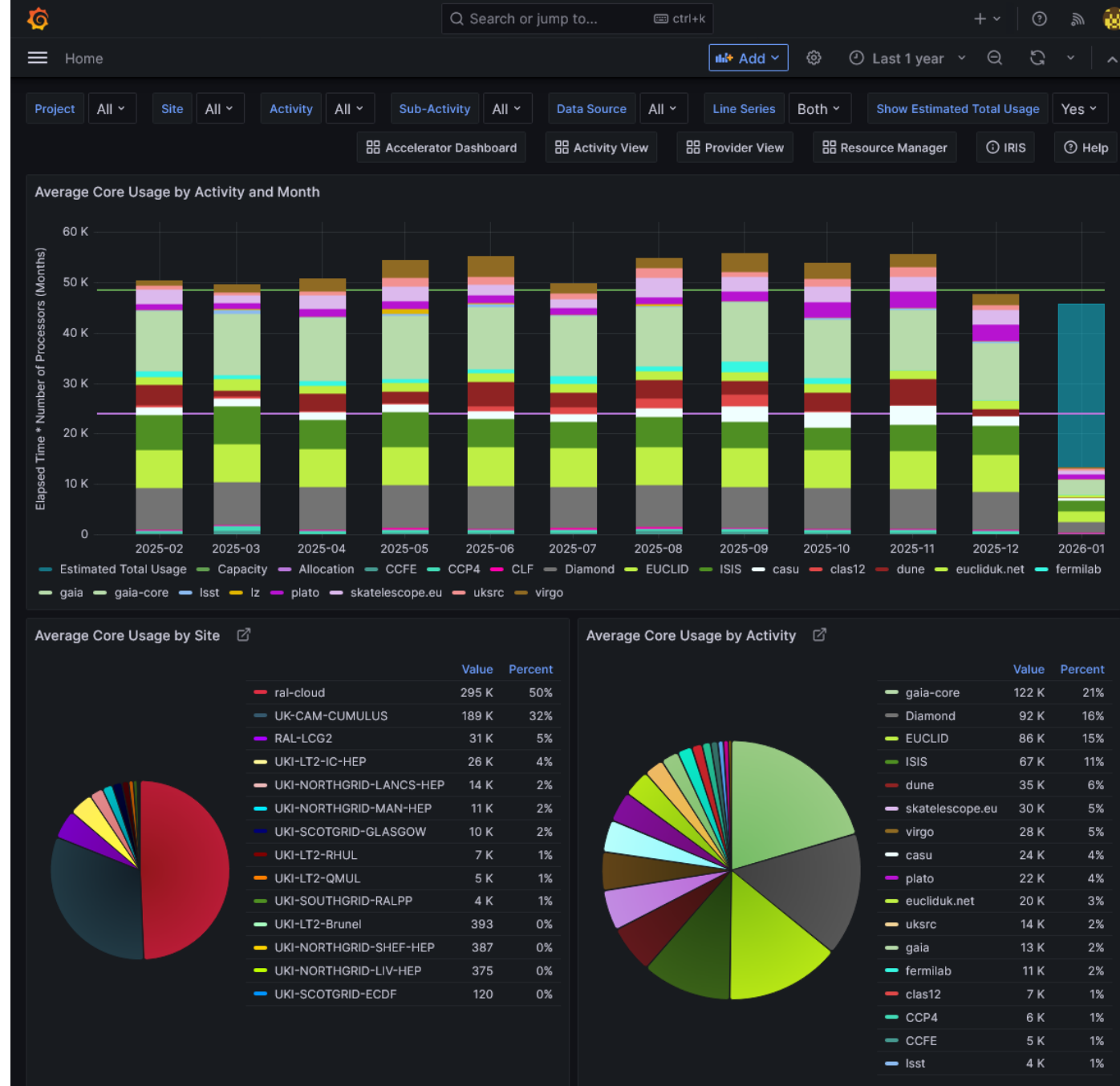
IRIS Accounting and APEL

Adrian Coveney
IRIS Collaboration Meeting
14 January 2026

IRIS Accounting Dashboard

<https://accounting.iris.ac.uk>

- Compute resource accounting system for IRIS
- Grafana dashboard with IRIS IAM login to explore the data
- One of the key federating services of IRIS



History

APEL server and client

- Project started over 20 years ago to be the HTC compute accounting client and repository for WLCG/EGI (with a separate accounting portal)
- Expanded to collect storage and cloud VM usage in the early 2010s

IRIS Accounting Dashboard

- Has been collecting data for IRIS since 2018
- DA funding let us expand on APEL functionality to add a bespoke Grafana interface for IRIS and to collect HPC data
- One of the first services to integrate with IRIS IAM

IRIS Development

Reusable Grafana dashboard

- Allowed us to provide a dashboard for the interTwin project without too much effort

Improved monitoring and configuration management

- Allows us to spot issues earlier and follow up with sites, and manage hosts in a consistent manner

Accelerator/GPU accounting (to be deployed)

- IRIS has supported development to integrate work done for EGI to enable accelerator accounting

Future Outlook

APEL2 / PEAR

- Project to overhaul the accounting for WLCG / EGI
- Complete redesign and rebuild of our accounting tools with flexibility in mind to make the accounting robust and allow for new metrics such as energy usage data
- Working with a cross-site team to collaborate on different aspects
- This will replace the backend for IRIS (and WLCG) once it is ready. This may require a new interface
- We will maintain and develop the current IRIS accounting system in the meantime



Science and
Technology
Facilities Council

Thank you

Jira: <https://stfc.atlassian.net/servicedesk/customer/portal/31>

Email: apel-admins@stfc.ac.uk